

Presenti su Mercato Elettronico della P.A.

web: [www.elgaitalia.com](http://www.elgaitalia.com) - socio CEI 05085 - Codice NATO Costr: / Forn. (N/CAGE): **AD 010**

P.IVA 01868240464 - Cod. Fisc. GLL FNC 53P02 L833R - Iscr. C.C.I.A.A. Lucca n°177644

Magazzino - Officina - Tel./Fax. +39 0584 617951 - via Mincio n° 67 - 55043 Lido di Camaione (LU)

## S.T. Servizi campali



### KLYN Camp

#### e-Merge series: portable, foldable and stackable WC or shower

Portable, foldable, stackable and lightweight cabin, available in WC or shower options. Its structure allows a fast deployment in less than a minute. Ideal to meet the needs of personal hygiene in camps, such as emergency or events scenarios. It is stackable in 3 units for transport and up to 6 units for storage. Its design provides great logistics versatility.

#### Advantages:

- Unisex, portable, foldable, stackable and lightweight.
- Available in autonomous WC, WC with rear discharge valve and shower.
- Assembled without tools in less than a minute.
- Ideal solution for camps, such as emergency or events scenarios.
- Patented product unique in the world.



e-Merge



e-Valve



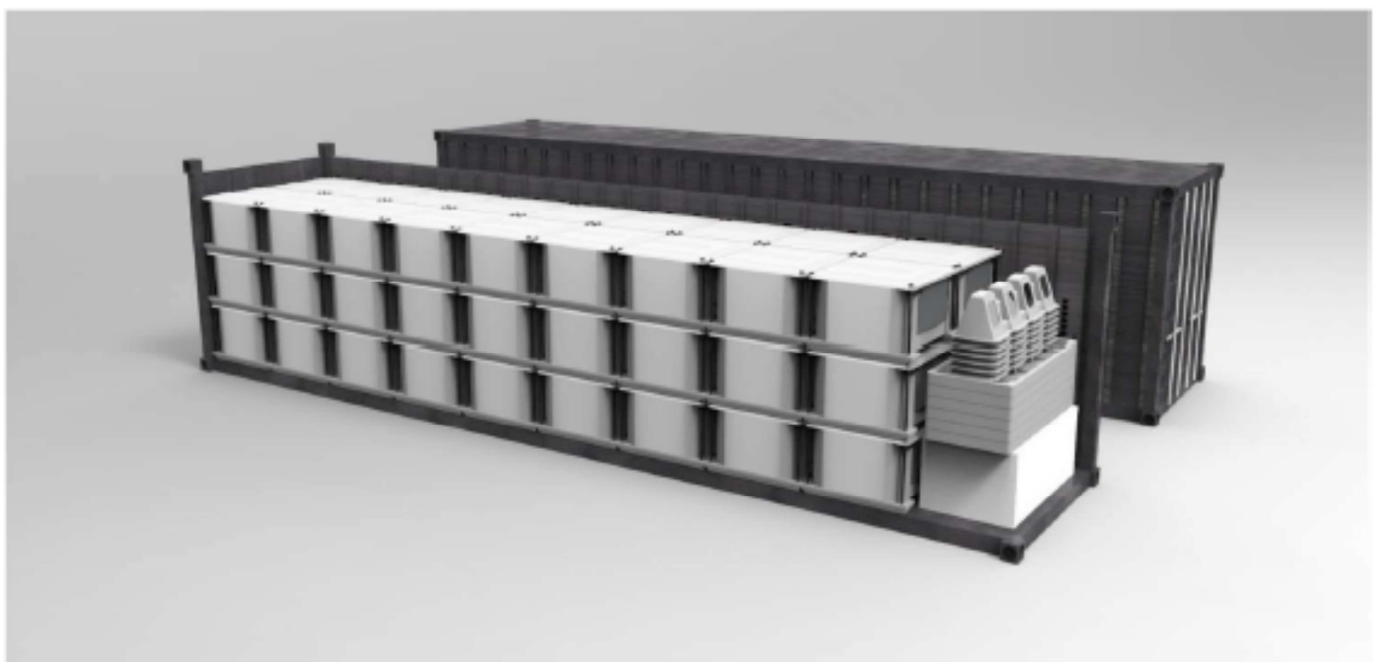
e-Shower

## Technical Features

---

Manufacturing materials	Base and roof:	High Density Polyethylene (HDPE) with UV protection.
	Canvas:	Waterproof, fire retardant M2 FR and UV protected elastic fabric.
	Structure:	Anodized aluminum telescope tubes.
Dimensions	Folded:	115 cm x 121 cm x 75 cm
	Unfolded:	115 cm x 121 cm x 225 cm
Weight	WC: 70-75 Kg / Shower: 55 Kg	
Optional accessories	e-Valve: rear connection valve for WC cabin.	
	Pumps kits, flexible bladders, piping and fittings water supply and drainage systems.	

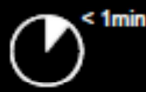
---



Transport Example: 54 e-Merge cabins, 5 Handy multiple sink with 5 mirror kits for sink and box with accessories, all folded and stacked in a 40' ft. container.



8 x 



## KLYN Camp

### Handy: multiple portable sink

Portable, foldable, stackable and lightweight multiple sink. Its structure allows a fast deployment in less than a minute. Ideal to meet the needs of personal hygiene in camps, such as emergency or events scenarios. It is stackable in 10 units for transport and up to 16 units for storage. Its design provides great logistics versatility.

#### Advantages:

- 8 service points, portable, foldable, stackable and lightweight.
- Assembled without tools in less than a minute.
- Mirrors and plugs optional kit.
- Ideal solution for camps, such as emergency or events scenarios.
- Patented product unique in the world.

## Technical Features

---

Manufacturing materials	High Density Polyethylene (HDPE) with UV protection.
Dimensions	Folded 198 cm x 90 cm x 20 cm * Unfolded 198 cm x 90 cm x 116 cm  * (height stacked from the second unit is 10 cm).
Weight	± 36kg.
Included accessories	8 water taps with temporized actuator.
Supply system	Water supply with female sleeve 1".
Drainage system	Two water drain outlets (inner Ø 50 mm).  Presentation of sinks in groups of six on a pallet for transport and storage.
Optional accessories	Mirror-holder panel (8 mirrors). ± 12 Kg. Mirror-holder panel with plugs (8 mirrors and 9 plugs). ± 14 Kg. Universal plugs. Box for mirror-holder panel transport. Pumps kits, flexible bladders, piping and fittings water supply and drainage systems.

---

## Assembly Sequence

